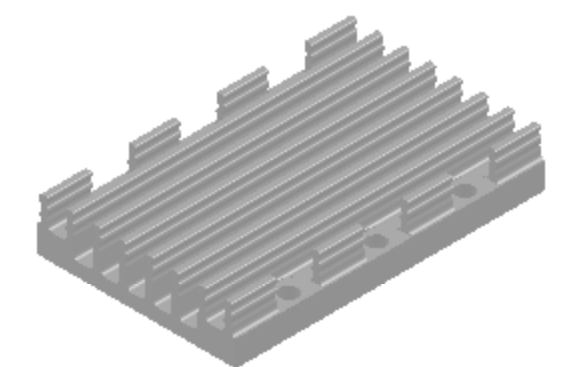
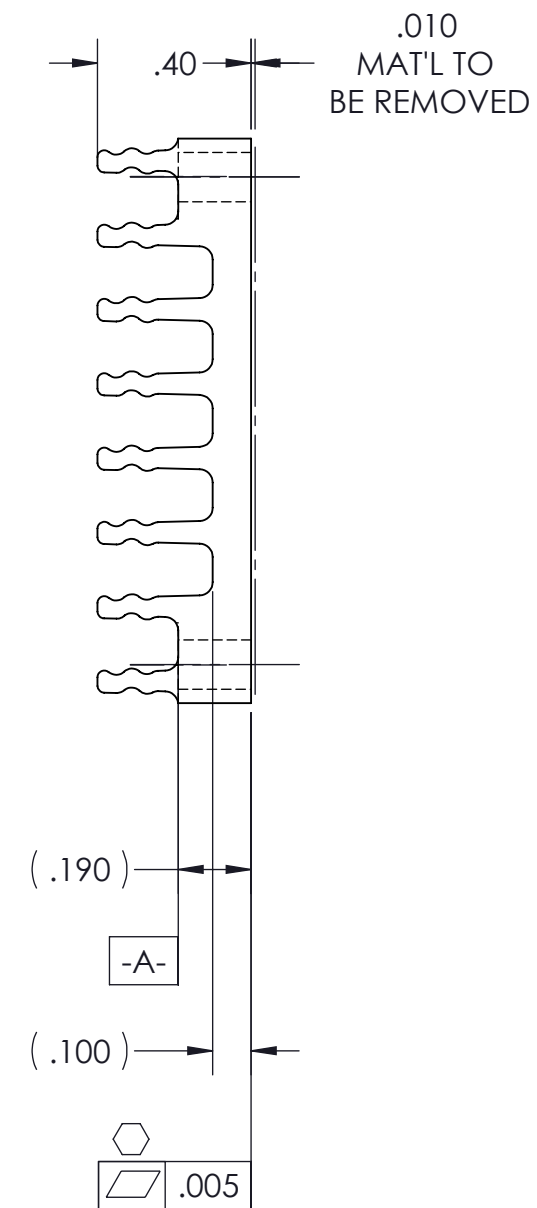
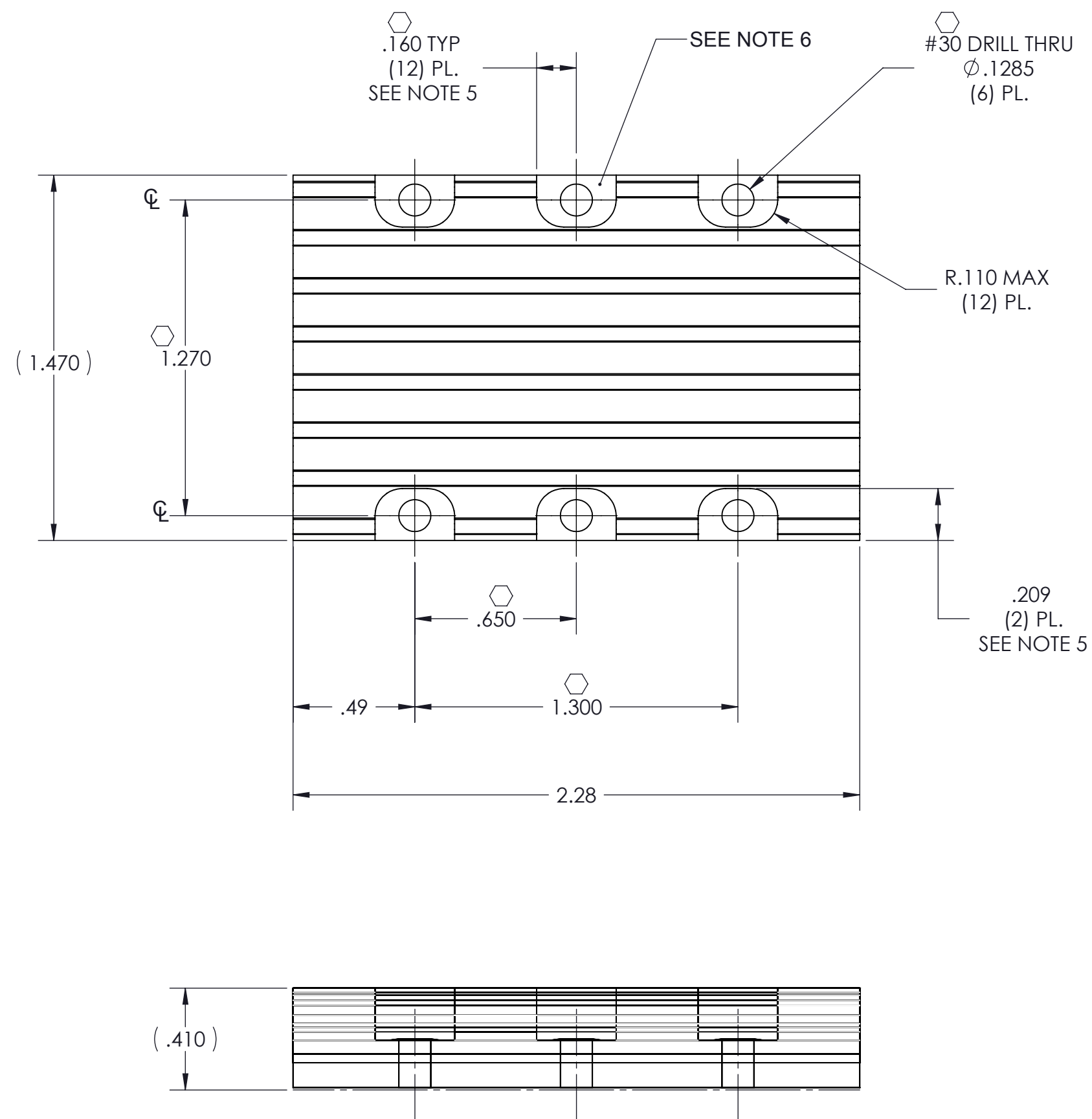


THIS DOCUMENT AND THE DATA DISCLOSED HEREIN OR HEREWITH IS NOT TO BE REPRODUCED, USED OR DISCLOSED IN WHOLE OR IN PART TO ANYONE WITHOUT THE PERMISSION OF VICOR CORP.

REVISIONS

REV	DESCRIPTION	DATE	APPROVED
1	RELEASED PER E053437	LEK 11/15/05	EF
2	REVISED PER E090758	AR 05/08/09	REJH
3	REVISED PER E091807	GCK 10/8/09	MM
4	REDRAWN PER E100902	DCS 7/14/10	KUK



NOTES:

1. MATERIAL: EXTRUSION SEE SHEET 2 OF 2
2. REMOVE ALL BURRS AND SHARP EDGES.
3. CLEAR FINISH, RoHS COMPLIANT, CHROMIUM FREE PER CST-0001 LATEST REVISION.
4. "⬡" DENOTES CRITICAL CHARACTERISTIC FOR LOT INSPECTION.
5. DIMENSION APPLIES AT SURFACE -A- (12) PLS.
6. MACHINED SURFACE TO BE .010 MAX BELOW SURFACE -A- (6) PLS.
7. DIMENSIONS ARE INCHES ONLY.

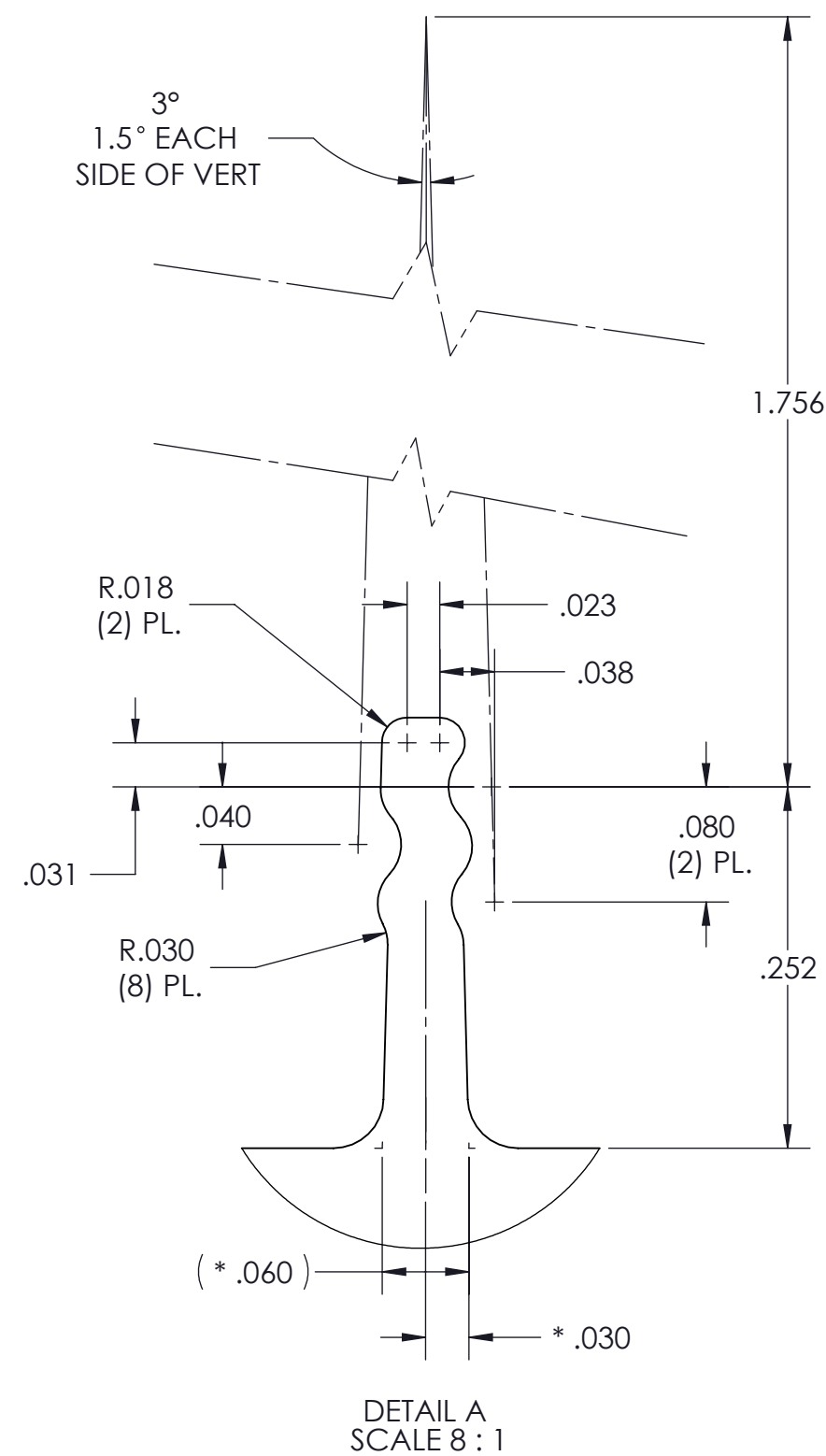
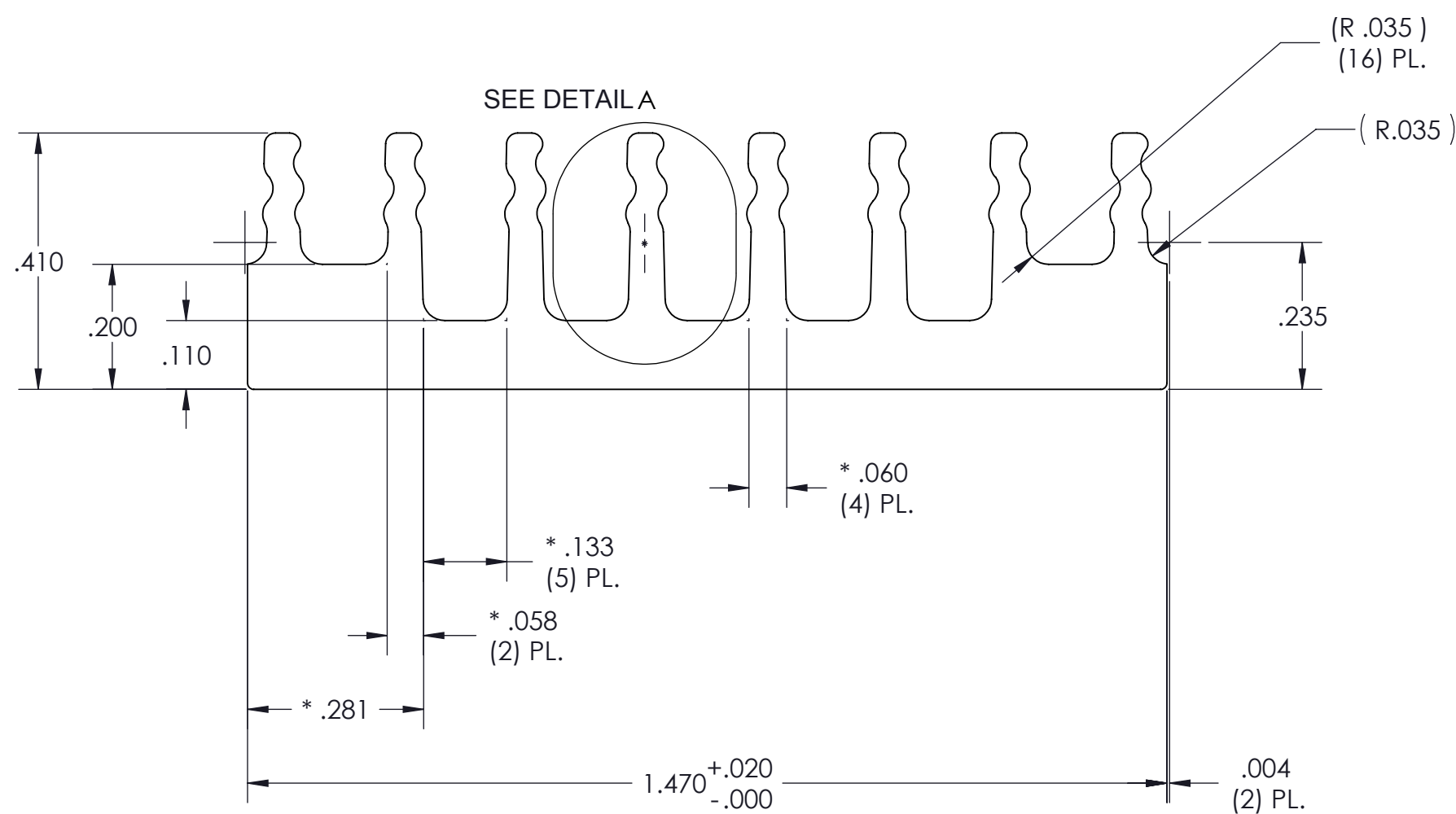
DRAWN	DATE					
D.P. KELLY	11/97					
UNLESS OTHERWISE SPECIFIED DIMENSIONS ARE INCH [MM] TOLERANCES ARE: DECIMALS ANGLES X.XX [X.X] = ±0.01 [0.25] ±1° X.XXX [X.XX] = ±0.005 [0.127]		HS CFG "C" LONG .4H LOW FLOW, THRU HOLE				
MATERIAL	FINISH	THIRD ANGLE PROJECTION	SIZE	CAGE CODE	DWG NO	REV
SEE NOTES	SEE NOTES		C	67131	30719	4
DO NOT SCALE DRAWING			SCALE 2 : 1		SHEET 1 OF 2	

VICOR CONFIDENTIAL

THIS DOCUMENT AND THE DATA DISCLOSED HEREIN OR HEREWITH IS NOT TO BE REPRODUCED, USED OR DISCLOSED IN WHOLE OR IN PART TO ANYONE WITHOUT THE PERMISSION OF VICOR CORP.

REVISIONS

REV	DESCRIPTION	DATE	APPROVED
	SEE SHEET 1 OF 2		



PROFILE COMMON FOR
30719
32174

NOTES:

- MAT'L: ALUMINUM 6063-T5"
- * DENOTES DIMENSION TO THEORETICAL SHARP CORNER.
- DIMENSIONS ARE INCHES ONLY.

DRAWN	DATE				
ANUYUGH RAGIPANI	05/08/09				
MATERIAL	UNLESS OTHERWISE SPECIFIED DIMENSIONS ARE INCH (MM)	'HS CFG "C" LONG .4H', LOW FLOW, THRU HOLE, EXTRUSION			
SEE NOTES	TOLERANCES ARE: DECIMALS ANGLES X.XX [X.X] = ±0.01 [0.25] ±1° X.XXX [X.XX] = ±0.005 [0.127]				
FINISH	THIRD ANGLE PROJECTION	SIZE	CAGE CODE	DWG NO	REV
SEE NOTES		C	67131	30719	4
		SCALE 4 : 1		SHEET 2 OF 2	