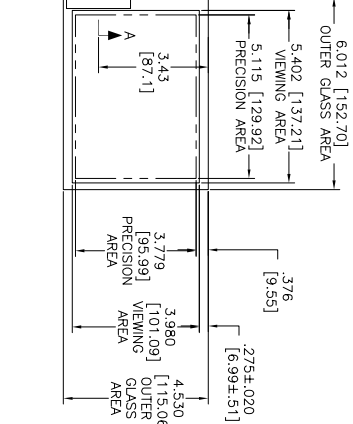
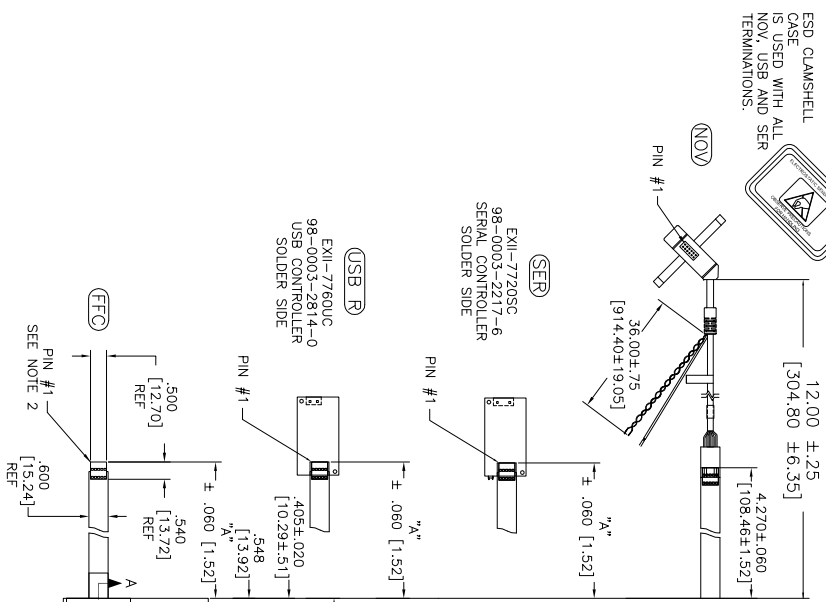
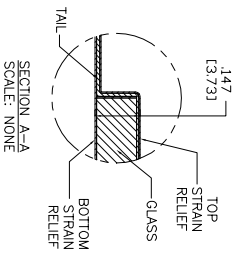


OGA DIAGONAL: 7.53 [191.20]  
 VA DIAGONAL: 6.71 [170.43]  
 PA DIAGONAL: 6.36 [161.53]



1.147 ±.020 [3.73 ±.51]  
 TOTAL THICKNESS  
 OF GLASS, CABLE  
 AND STRAIN RELIEF



TOP LEVEL NUMBER	US NUMBER	CHINA NUMBER	TYPE	DM "A" (TOTAL GLASS TO CONNECTOR)	A/G FINISH	PROD SPEC
17-8091-203	98-0003-2549-2	N/A	FFC	4.27" [108.46]	AG500	23655
17-8091-204	98-0003-2550-0	N/A	FFC	6.00" [152.40]	AG500	23655
17-8091-205	98-0003-2551-8	59-0000-0111-1	FFC	8.00" [203.20]	AG500	23655
17-8091-206	98-0003-2552-6	N/A	NOV	SEE DWG	AG500	23655
17-8091-221	98-0003-2555-9	59-0000-0113-7	SER	4.27" [108.46]	AG500	23655
17-8091-223	98-0003-2556-7	59-0000-0114-5	SER	6.00" [152.40]	AG500	23655
17-8091-227	98-0003-2558-3	N/A	SER	8.00" [203.20]	AG500	23655
17-8091-218	98-0003-2933-8	59-0000-0112-9	USB R	4.27" [108.46]	AG500	23655
17-8091-226	98-0003-2934-6	N/A	USB R	8.00" [203.20]	AG500	23655

PINOUT	UR
1	LR
2	LL
3	SHLD
4	UL
5	UR

UNITS	INCHES [MM]
TOLERANCE UNLESS OTHERWISE SPECIFIED	
X	±.03 [.76]
.XXX	±.015 [.38]
ANGLES	±1°

© Copyright 2005 3M TOUCH SYSTEMS  
 THIS DOCUMENT IS THE PROPERTY OF 3M TOUCH SYSTEMS AND IS TO BE USED WITHOUT THE WRITTEN PERMISSION OF 3M TOUCH SYSTEMS. NO OTHER THAN 3M AUTHORIZED PERSONNEL ARE TO BE REPRODUCED.

MARKETING DRAWING  
 SCT32NN 6.71"

REV	DATE	BY	CHK	APP
G	2/12	SB		
F	9/11	SB		
O5	5/09	SB		

UNITS	INCHES [MM]
DO NOT SCALE DRAWING	
SCALE	1 = 1

REV	DATE	BY	CHK	APP
G	28406-MKT			

- NOTES:  
 1. WEIGHT OF GLASS IN GRAMS: 134 ±10%  
 2. NICOOMATIC HOUSING P/N: 0105  
 HOUSING ORIENTED WITH LATCH DOWN

