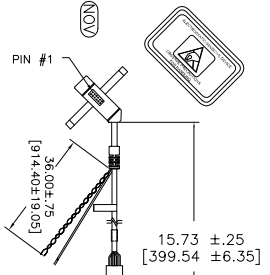


OGA DIAGONAL: 28.63 [727.24]  
 VA DIAGONAL: 26.28 [667.40]  
 PA DIAGONAL: 24.80 [629.95]

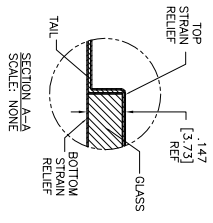
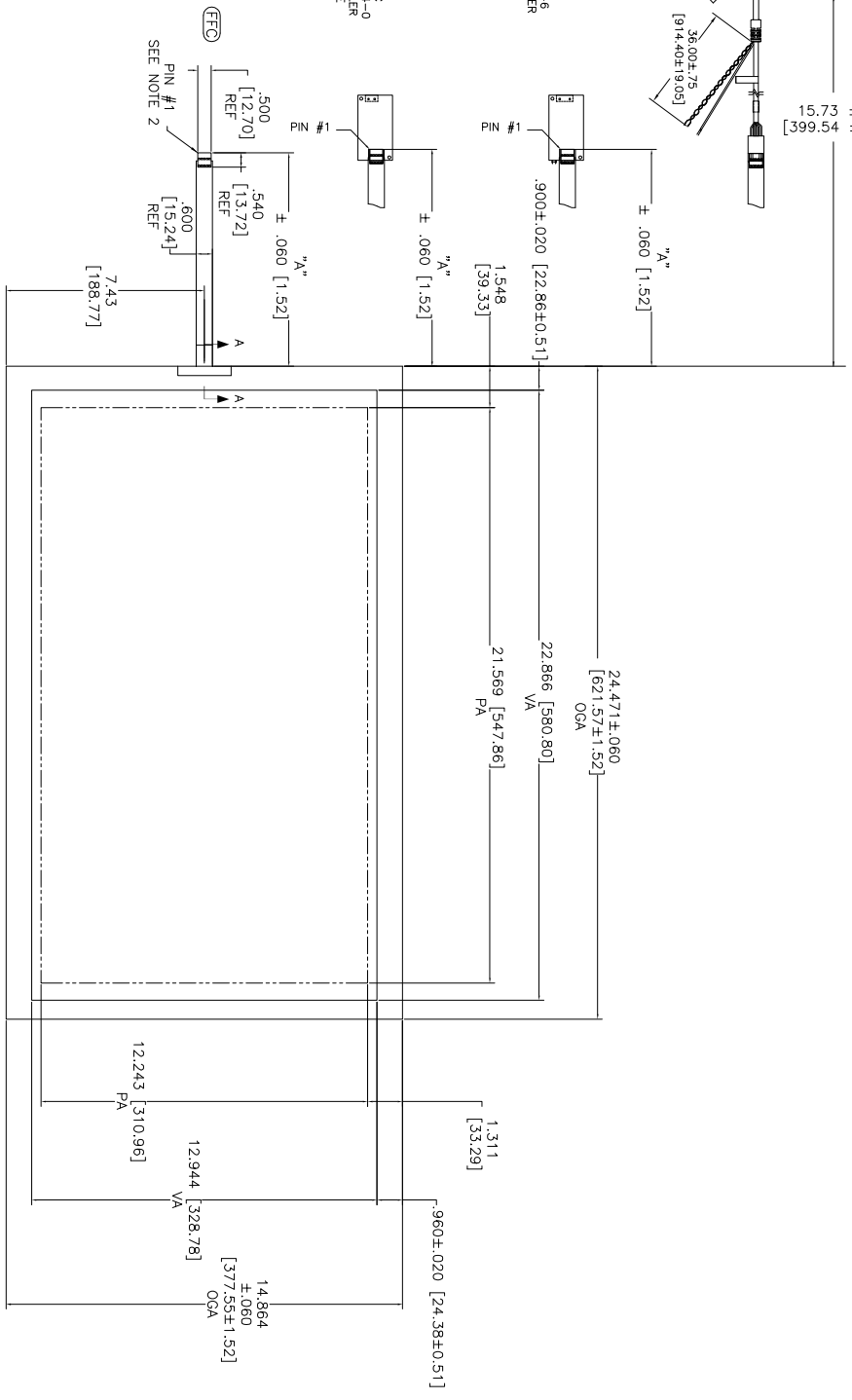
TOP LEVEL NUMBER	US NUMBER	TYPE	DIM "A" (TOTAL GLASS TO CONNECTION)	A/G FINISH	PROD SPEC
17-8831-205	98-0003-2673-0	FCG	8.00" [203.20]	AG500	23655
17-8831-222	98-0003-2204-4	SER	8.00" [203.20]	AG500	23655
17-8831-206	98-0003-2674-8	NOV	8.00" [203.20]	AG500	23655
17-8831-226	98-0003-3028-6	USB R	8.00" [203.20]	AG500	23655
N/A	98-0003-3647-3	USB R	8.00" [203.20]	WC100	34523

ESD CLAMSHELL CASE IS USED WITH ALL NO. USED PARTS TERMINATIONS.



(SER) EXII-77209SC  
 98-0003-2209SC  
 SERIAL CONTROLLER  
 SOLDER SIDE

(USB R) EXII-7760UC  
 98-0003-2814-0  
 USB CONTROLLER  
 SOLDER SIDE



1.47 ±.020 [3.73 ±.51]  
 TOTAL THICKNESS  
 OF GLASS, CABLE  
 AND STRAIN RELIEF

NOTES:

1. WEIGHT OF GLASS IN GRAMS: 1788 ±10%
2. NICOMATIC HOUSING P/N: OLOS
3. NICOMATIC RECEPTACLES (PINS) MATTE TIN PLATED P/N: 14106-12
4. HOUSING ORIENTED WITH LATCH DOWN

INCHES (MM)

3M  
 3M  
 3M

MARKETING DRAWING  
 SC152NN 26.28" W

DATE: 5/23/06

31971-MKT

1	ISSUED FOR	01/08/05	1/1/05
2	REVISED	02/03/05	1/1/05
3	REVISED	02/03/05	6/29/05