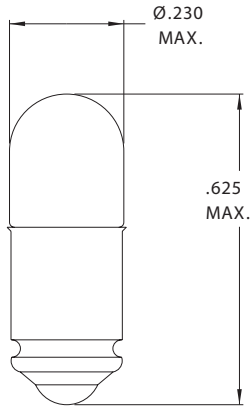




## T-1 3/4 Midget Groove Base



Part Number	Design Voltage	Amps	MSCP	Life Hours	Filament Type
CM698	1.35	.060	.010	500	C-6
CM266	2.50	.350	.210	10,000	C-2R
CM8699	2.50	.200	.220	500	C-2R
CM8704	2.70	.060	.040	6,000	C-2R
CM390	3.00	.015	.004	10,000	C-6
CM8849	3.00	.350	.300	10,000	C-2R
CM7345	4.50	.120	.050	25,000	C-2R
CM3152	5.00	.060	.150	5,000	C-2R
CM7346	5.00	.060	.030	60,000	C-2R
CM7347	5.00	.060	.050	25,000	C-2R
CM7348	5.00	.115	.150	40,000	C-2R
CM7350	5.00	.190	.450	1,000	C-2R
CM337	6.00	.200	.600	1,000	C-2R
CM8705	6.00	.040	.030	10,000	C-2R
CM8706	6.00	.200	.100	50,000	C-2F
CM379	6.30	.200	.400	20,000	C-2F
CM398	6.30	.200	.550	5,000	C-2R
CM7351	6.30	.040	.020	2,000	C-2V
CM7352	6.30	.150	.450	3,000	C-2R
CM8708	6.30	.070	.230	1,000	C-2R
CM397	10.0	.040	.080	5,000	C-2F
CM709	10.0	.140	.002	50,000	C-2F
CM7353	11.0	.022	.030	10,000	C-2F
CM7354	12.0	.040	.120	10,000	C-2F
CM336	14.0	.080	.500	1,500	C-2F
CM386	14.0	.080	.300	15,000	C-2F
CM393	14.0	.100	.500	10,000	C-2F
CM346	18.0	.040	.150	10,000	C-2F
CM457	22.0	.040	.300	2,000	C-2F
CM8177	24.0	.050	.500	1,000	C-2F
CM2350	28.0	.050	.700	1,000	C-2F
CM276	28.0	.060	.340	25,000	C-2F
CM334	28.0	.040	.340	4,000	C-2F
CM388	28.0	.040	.300	7,000	C-2F
CM6035	28.0	.024	.150	4,000	CC-2F
CM7355	28.0	.040	.150	10,000	C-2F
CM7356	28.0	.065	.650	5,000	C-2F
CM2250	48.0	.025	.200	5,000	C-2F

147 Central Avenue  
Hackensack, NJ 07601  
Phone: (201) 489-8989  
Fax: (201) 489-6911

18703 Dix Toledo Road  
Brownstown, MI 48193

Saret Zone Franca, Edificio B  
Alajuela Costa Rica

E-mail: sales@chml.com • Web Site: www.chml.com